



AXON IVY: THE COMPREHENSIVE BUSINESS PROCESS MANAGEMENT SUITE

Process Lifecycle

The Axon.ivy BPM Suite is a holistic tool for process optimization. It covers all of the disciplines of the process lifecycle in one single platform. From process modeling and process documentation to process execution, including the integration of people and systems, all the way to process monitoring – seamless and reliable!

Professional BPM

Professional BPM is organized as follows:

- Axon.ivy Modeler
- Axon.ivy Publish
- Axon.ivy Governance
- Axon.ivy Monitor

With professional BPM, your company can model its processes in a transparent and targeted manner and can implement improvements thanks to optimal communication. Optimization potential is assessed and efficiency is increased.

Technical BPM

Nowadays, companies are more than ever under competitive pressure. They are forced to continuously optimize their processes and support them through automation. With its technical BPM, Axon.ivy relieves employees of manual repetitive efforts, eliminates media discontinuities and closes process gaps.

Technical BPM is organized as follows:

- Axon.ivy Designer
- Axon.ivy Engine
- Axon.ivy Analytics



AXON.IVY MODELER

User-friendly Interface

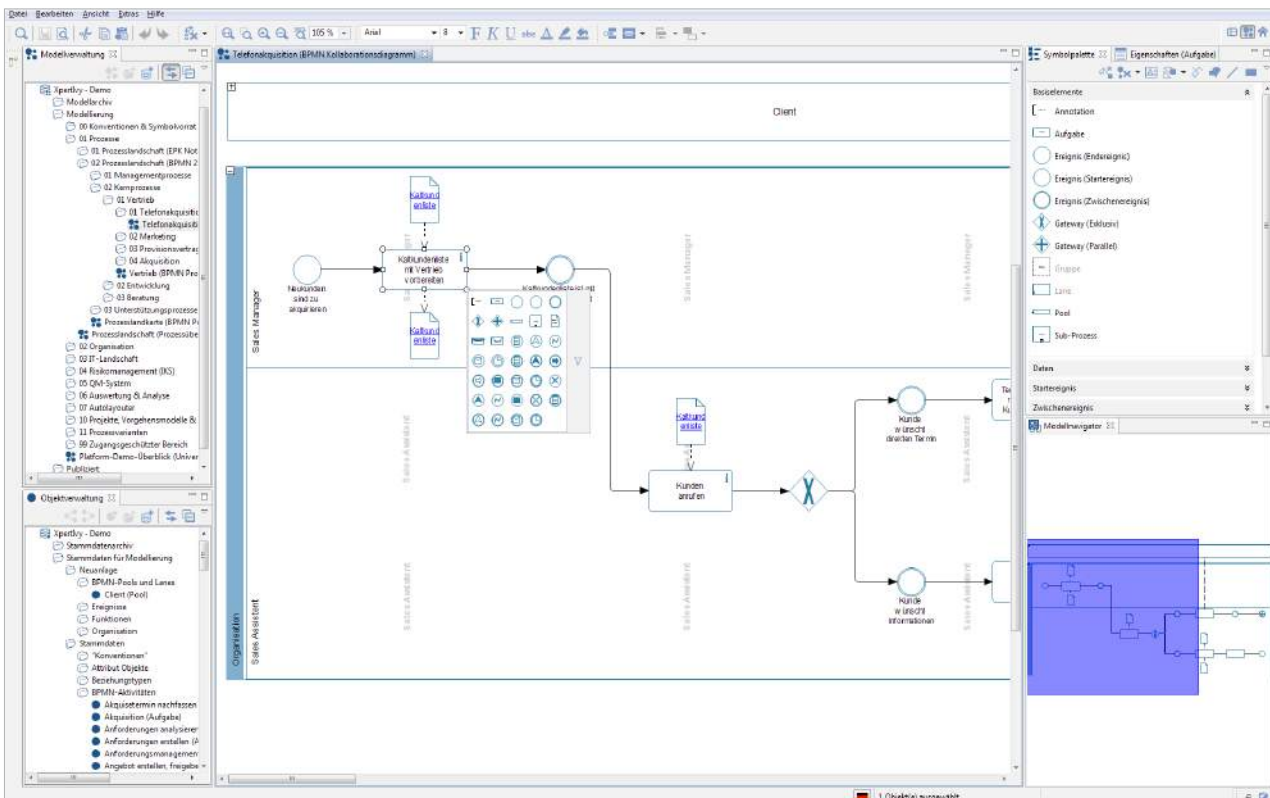
The Axon.ivy Modeler is the professional modeling tool for beginners and experts. Its intuitive design allows for an easy and rapid start in the world of process modeling. Growing demands for more tool functionalities are always taken into account and routinely updated and included in the standard version of the Axon.ivy Modeler. Preexisting models and methods help you in the description of your business processes, enterprise architecture, technical IT modeling, as well as with the documentation of certification-relevant content (e.g. ISO, SOX, etc.) and the mapping of your organization. BPMN, EPK and other notation methods are immediately available upon delivery.

Open Metamodel

Axon.ivy Modeler open metamodel offers you the possibility to define, tailor, and extend your own notation and methods based on your company's individual needs. A method editor supports you in this process. Integrated analysis functions in the form of reports allow for an extensive assessment in optimizing processes. The effortless linking to real-time data from external sources provides new perspectives, e.g. activity based costing or your consumption plan. Linking to third party systems (such as SAP) for the import and export of relevant data is supported through a variety of interfaces.

The Axon.ivy Modeler is especially suitable for:

- The planning and design of wide ranging processes across organizations
- The documentation of detailed process descriptions
- The professional and process-based description of IT systems
- The introduction of standard software and workflow systems
- Support in compliance management
- Enterprise architecture modeling



Professional process modeling according to the BPMN 2.0 standard



AXON.IVY PUBLISHER

Individual and Target Group Tailored Communication

Providing various target groups with information is a central success factor in modeling projects. With Axon.ivy Publisher, your content reaches every user.

The collaborative communication and knowledge platform allows for a high performance user-oriented publication. Information surrounding processes, documents, organisations, and (IT-)systems is rendered available to employees, suppliers and customers. The latest encryption and access technologies ensure a safe and reliable storage of data in the internet, or in your intra-/extranets.

85 Percent of the Human Perception is visual

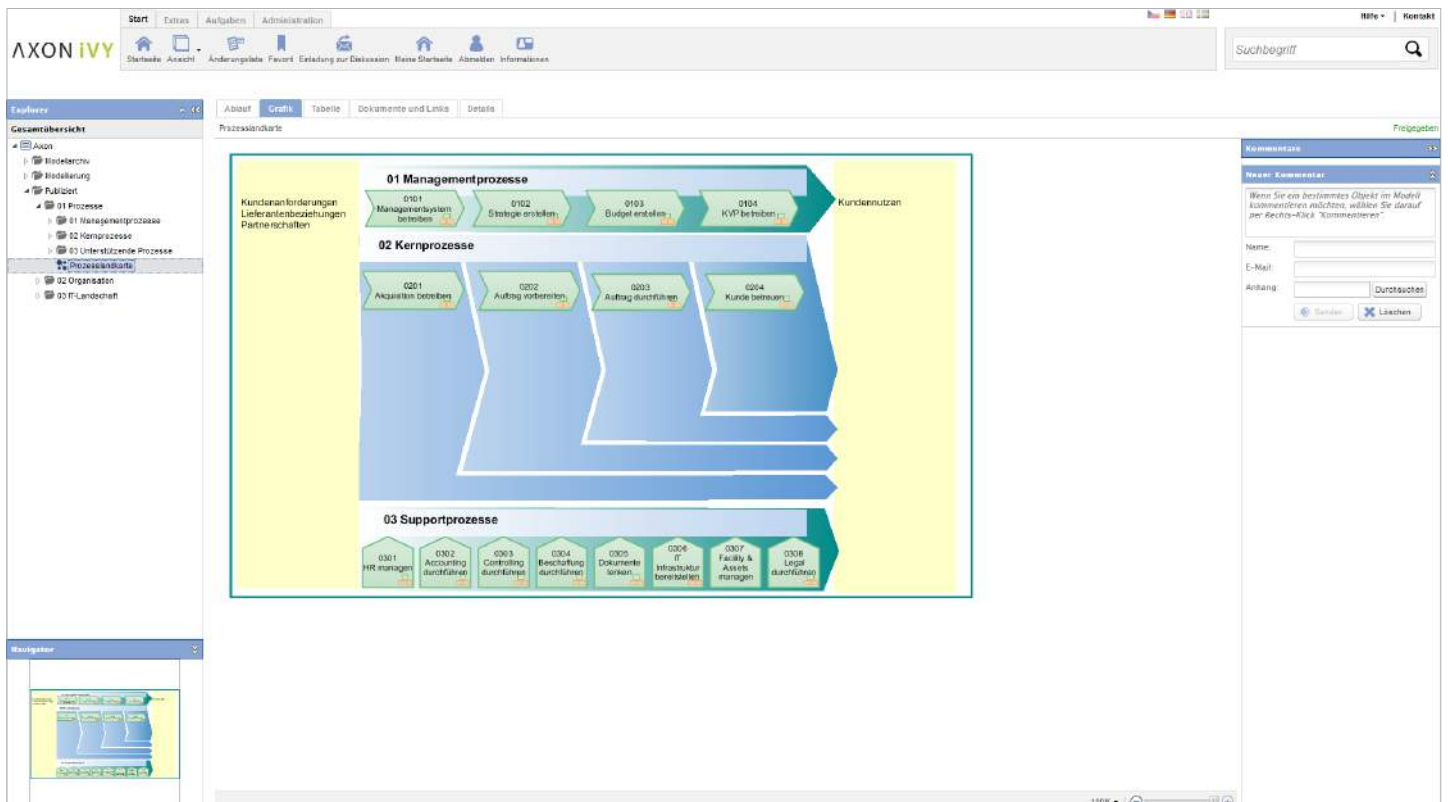
For this reason, Axon.ivy Publisher allows for an individual display of all modeled content. Thanks to its intuitive work surface, Axon.ivy Publisher transforms into an information hub for your company.

Extensive alternative display options are available. Each user finds his/her preferred perspective – from a simple display to an expert view. The intuitive navigation, integrated full-text search and rapid customization to your company design complete this ideal tool.

Axon.ivy Publisher is platform independent, deployable on actual server architectures and is supported by all common browsers.

Axon.ivy Publisher is particularly suitable for:

- The publication of all modeled content
- The display of electronic manuals for training, certification and audits
- The support of a continuous improvement process (CIP)
- The introduction of sustainable compliance management
- The introduction of process-based integrated management systems



A clear presentation with Axon.ivy Publisher

AXON.IVY GOVERNANCE

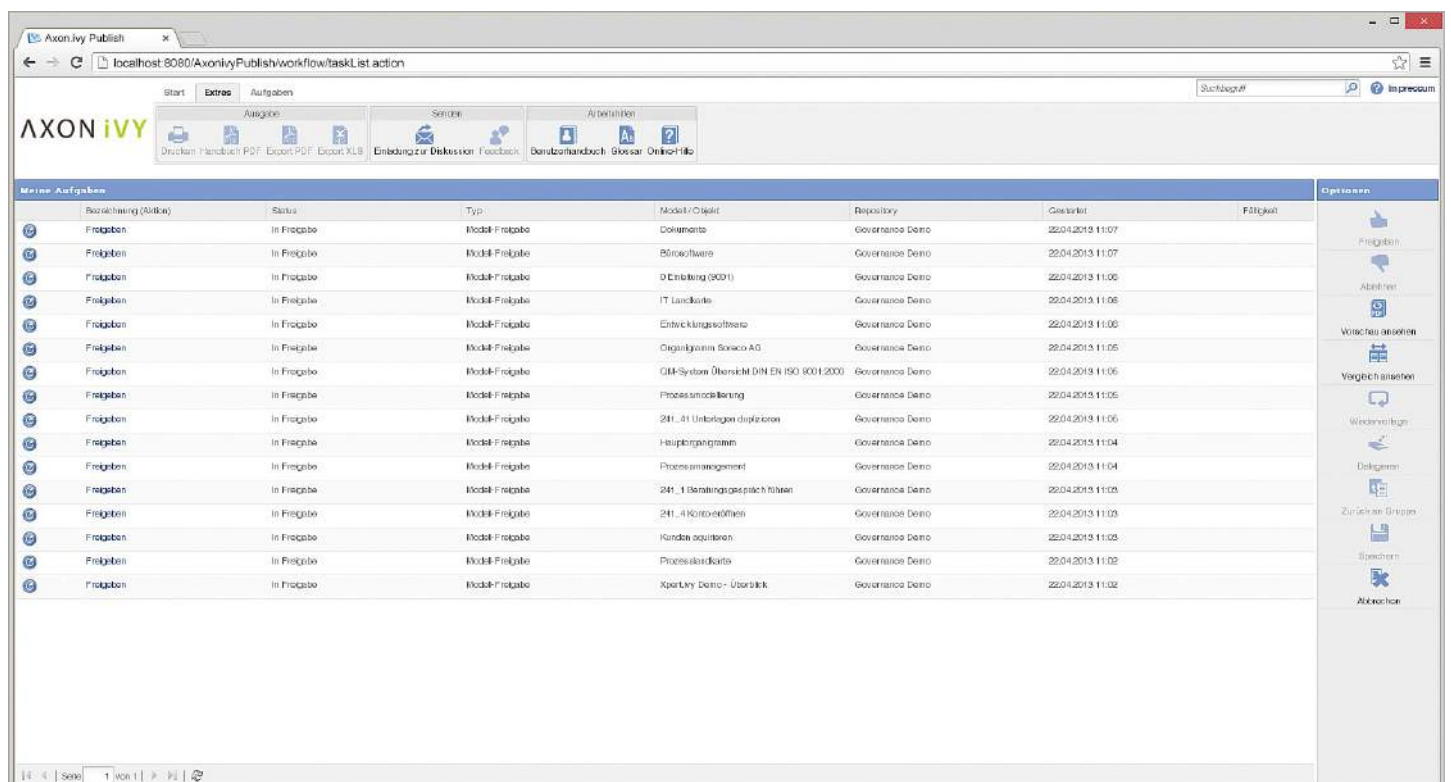
Continuity and Sustainability in Modeling and Publication

Continuous process management delivers lasting benefits for your company. With Axon.ivy Governance, this is a no-brainer. Manual work steps to maintain your content in the Axon.ivy modules Modeler and Publisher are minimized. Axon.ivy Governance supports you in the regular and recurring work of model and document management. Areas of application range from the approval of new content and the control of versions, to the targeted release of information to chosen recipients.

The maintenance and release of your content can be quite a burden. But thanks Axon.ivy Governance, workflows and methods can be standardized at the touch of a button.

Axon.ivy Governance is especially suitable for:

- The realization of a release cycle management
- Support in document management
- The implementation of a continuous improvement process (CIP)
- Support in compliance management
- Support in content maintenance



The screenshot displays the 'Axon.ivy Publish' web application interface. The browser address bar shows 'localhost:8080/AxonivyPublish/workflow/taskList.action'. The page features a navigation menu with 'Start', 'Extras', and 'Aufgaben'. Below the menu is a toolbar with icons for 'Drucken', 'Handbuch', 'PDF', 'Export PDF', 'Export XLS', 'Einbindung zur Diskussion', 'Feedback', 'Benutzerhandbuch', 'Glossar', and 'Online-Hilfe'. The main content area is titled 'Meine Aufgaben' and contains a table with the following columns: 'Bezeichnung (Mikro)', 'Status', 'Typ', 'Modell/Objekt', 'Repository', 'Geplant', and 'Freigelegt'. The table lists 15 tasks, all with a status of 'In Freigabe' and a type of 'Modell-Freigabe'. The right sidebar contains a 'Optionen' menu with icons for 'Freigeben', 'Abblenden', 'Vorherige anzeigen', 'Weiter anzeigen', 'Wiederherstellen', 'Delegieren', 'Zurück zur Gruppe', 'Suchen', and 'Abbrechen'. The footer shows 'Seite 1 von 1'.

Bezeichnung (Mikro)	Status	Typ	Modell/Objekt	Repository	Geplant	Freigelegt
Freigabe	In Freigabe	Modell-Freigabe	Dokumente	Governance Demo	22.04.2013 11:07	
Freigabe	In Freigabe	Modell-Freigabe	Businesssoftware	Governance Demo	22.04.2013 11:07	
Freigabe	In Freigabe	Modell-Freigabe	D-Embildung (8001)	Governance Demo	22.04.2013 11:06	
Freigabe	In Freigabe	Modell-Freigabe	IT-Landkarte	Governance Demo	22.04.2013 11:06	
Freigabe	In Freigabe	Modell-Freigabe	Entwicklungssoftware	Governance Demo	22.04.2013 11:06	
Freigabe	In Freigabe	Modell-Freigabe	Organigramm Saxaco AG	Governance Demo	22.04.2013 11:05	
Freigabe	In Freigabe	Modell-Freigabe	QM-System Übersicht DIN EN ISO 9001:2000	Governance Demo	22.04.2013 11:05	
Freigabe	In Freigabe	Modell-Freigabe	Prozessmodellierung	Governance Demo	22.04.2013 11:05	
Freigabe	In Freigabe	Modell-Freigabe	241_41 Unterlegen duplizieren	Governance Demo	22.04.2013 11:05	
Freigabe	In Freigabe	Modell-Freigabe	Hauptprogramm	Governance Demo	22.04.2013 11:04	
Freigabe	In Freigabe	Modell-Freigabe	Prozessmanagement	Governance Demo	22.04.2013 11:04	
Freigabe	In Freigabe	Modell-Freigabe	241_4 Beratungsprozess führen	Governance Demo	22.04.2013 11:03	
Freigabe	In Freigabe	Modell-Freigabe	241_4 Kontexte öffnen	Governance Demo	22.04.2013 11:03	
Freigabe	In Freigabe	Modell-Freigabe	Kunden acquieren	Governance Demo	22.04.2013 11:03	
Freigabe	In Freigabe	Modell-Freigabe	Prozessdiagnostik	Governance Demo	22.04.2013 11:02	
Freigabe	In Freigabe	Modell-Freigabe	Xpertury Demo - Übersicht	Governance Demo	22.04.2013 11:02	

Clear Task Management with Axon.ivy Governance



AXON.IVY DESIGNER

Process Design

Axon.ivy BPM Suite's design environment is used to depict technical process models. Processes are recorded in the form of graphical sequence diagrams. Intuitive input wizards assist you in the definition of data exchanges with existing systems and the integration of employees in the processes. The dialog pages are created with Axon.ivy Designer's graphical support without programming effort. Depending on the application and the GUI requirements, dialog pages can be created using RIA (Rich Internet Application) or in modern HTML pages (JSF Java Server Faces).

Process Simulation

At any time during the design phase, generated process applications can be launched at the touch of a button for simulation and testing. To put the process applications into operation, these are passed on to the Axon.ivy Engine, where they are interpreted and carried out at runtime.

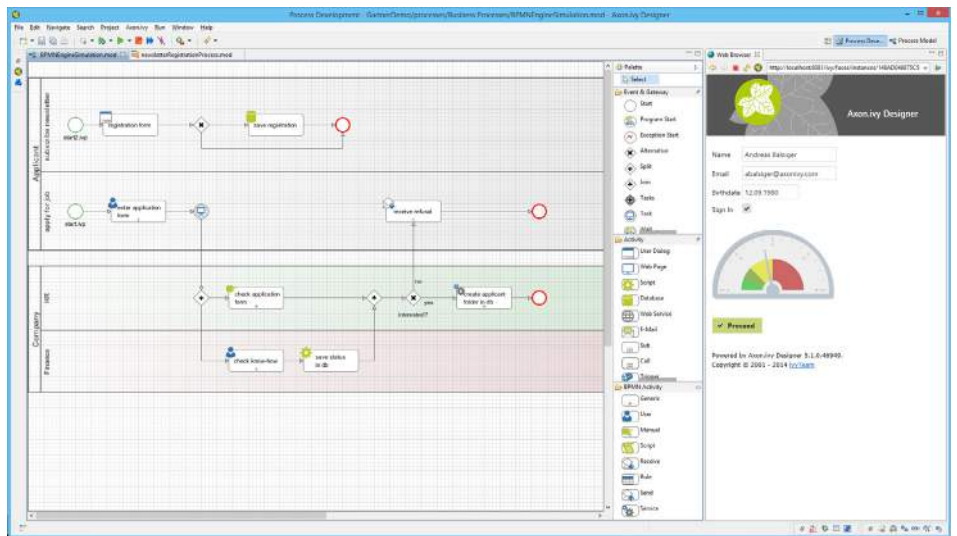
Workflow Management

The integrated workflow management in Axon.ivy Designer ensures the correct execution of workflows. This includes the administration of roles, tasks, rights, rules, documents, data, deadlines as well as escalations.

Reusability

Generated dialog pages or process parts are not solely used in one single application. Axon.ivy Designer offers in this respect a wide range of possibilities. All created components can be reused and additional programming effort can be avoided.

Through the proven Model-View-Controller (MVC) approach, data storage, process control and process visualization can be thoroughly separated. Generated applications are therefore reusable and always maintainable.



AXON.IVY ENGINE

Process Execution

Axon.ivy BPM Suite was developed above all to support in process execution. This is why a drawn process model can be converted into an executable application with just a few clicks and no programming effort.

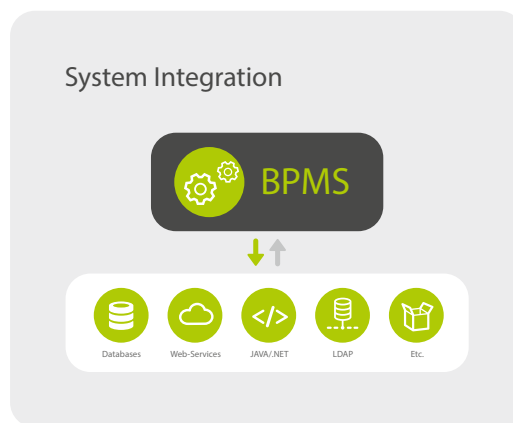
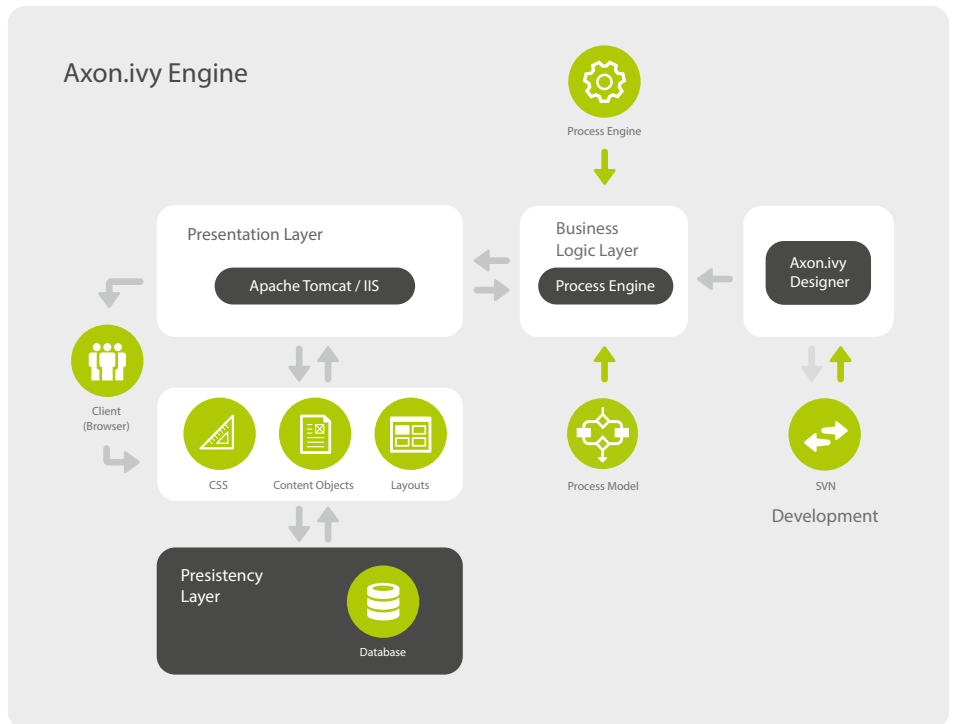
Process adjustments can even be done during the process execution and be implemented. To this end, intelligent process model management is available for versioning.

The process Engine ensures that processes are executed according to guidelines, that process states persist and that process instances are initialized correctly.

System Integration

Since most system landscapes have grown over a period of time, they are heterogeneous. Redundant data storage and high-maintenance interfaces are not the exception but rather the norm. For this reason, Axon.ivy BPM Suite has an Enterprise Application Integration EAI component.

This component transforms the process oriented connection of applications across companies and technologies into child's play.





AXON.IVY ANALYTICS

Business Activity Monitoring

The core tasks in process controlling consist of evaluating, monitoring and documenting ongoing business processes. Deviations from a defined state must be recognized in order for appropriate corrective action to be taken.

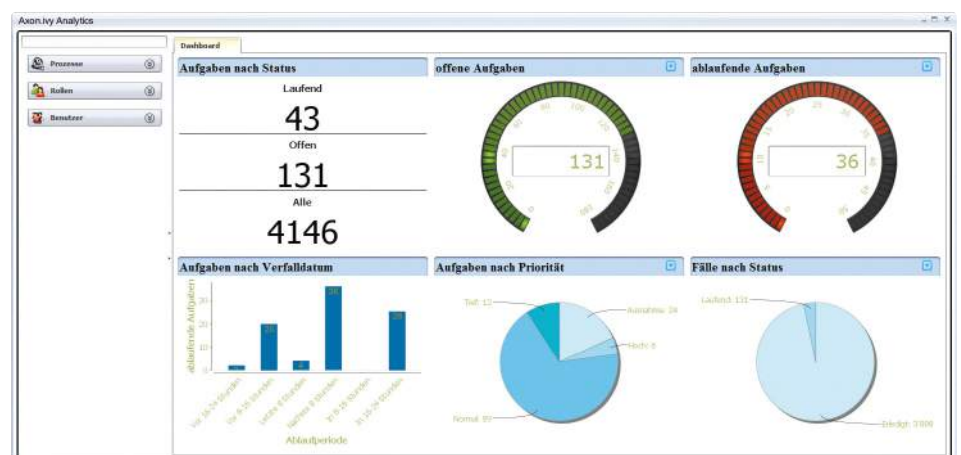
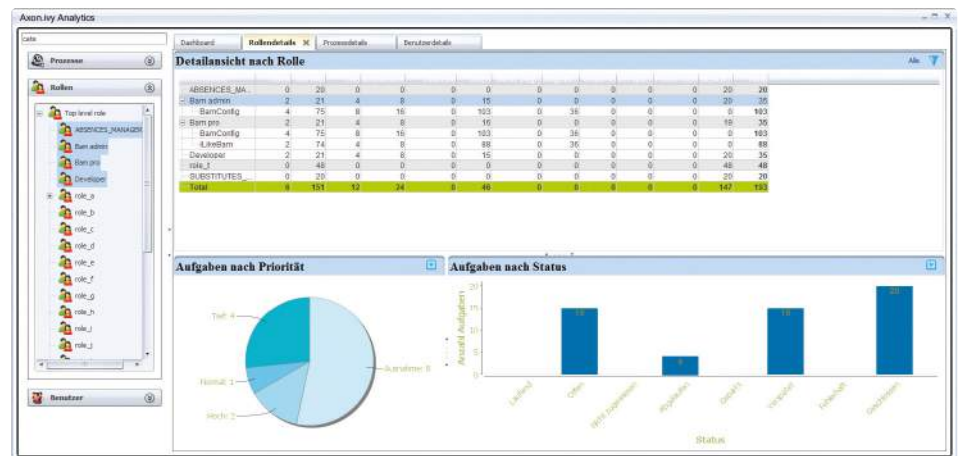
Axon.ivy Analytics stands for Business Activity Monitoring (BAM). BAM allows for a continuous process controlling in real-time. All activities are recorded with a processbased approach. In addition to content data analysis, the Axon.ivy Analytics enables a continuous overview of all ongoing processes and the possibility to recognize bottlenecks and weaknesses early on. Business decisions are therefore clearly facilitated and business processes optimized.

Dashboard

Users are always in need of a clear overview of a wide variety of information on one display. The Axon.ivy Analytics Dashboard provides a summary of current cases, gives information on impending escalations and enables a direct connection to corresponding tasks (Drill Down).

The Dashboard's display can be customized. Preexisting diagrams and tables are available. Moreover, it is possible to filter according to processes, roles and users.

The definition of key performance indicators (KPI) is essential for the proper implementation of possible measures. In Axon.ivy Analytics, appropriate threshold values can easily and directly be changed on the user interface.



AXON.IVY REFERENCES

Airbus	Mayr-Melnhof Karton
AMAG	MBDA
ATMOS Medizintechnik	Migros
Axel Springer	Mohn Media Mohndruck
bank zweiplus AG	Nationale Suisse
Basler Kantonalbank	Naturstrom
Bauer AG	Novartis
Coppenrath & Wiese	R + V Versicherung
Credit Suisse	Staatsgalerie Stuttgart
DER Touristik Köln	Stadt Arnsberg
E.ON	Stadt Luzern
Emil Frey	SwissLife
Emmi Schweiz	Thomas Cook
ERGO	Thurgauer Kantonalbank
Fiat Automobile	Vaillant
FIXIT™	Weiss automotive
Hummel Holding AG	
Interpane Glas Industrie	
Kanton Zug	
KSV 1870	
Lienhard Office Group	
Logwin Services	
Luzerner Kantonalbank	

SWITZERLAND (head office)

AXON IVY AG
Schlössli Schöneegg
Wilhelmshöhe
P.O. Box 7760
CH-6000 Lucerne 7
Phone +41 41 249 25 70

GERMANY

AXON IVY AG
Munich Office
Elsenheimerstraße 57
D-80687 Munich
Phone +49 89 58 999 86 0

AUSTRIA

AXON IVY AG
Vienna Office
Neubaugasse 43
A-1070 Vienna
Phone +43 1 522 25 76

SINGAPORE

AXON IVY Pte. Ltd.
4 Battery Road
Bank of China Building #25-01
Singapore 049908
Phone +65 9168 0603

USA

AXON IVY Inc.
281 Ellis Street
San Francisco, CA 94102